

ACCESSORIES

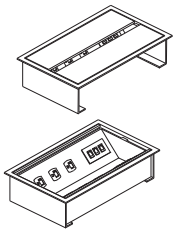


Various accessories may be added to any of the series offerings to enhance storage, data, electrical or wiring capabilities as needed. Most accessories can be factory installed (contact customer service for additional information)

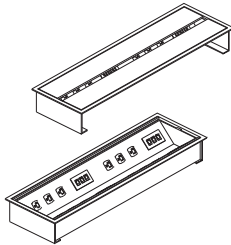
ACCESSORIES

List Price

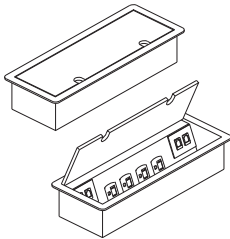
Power Options



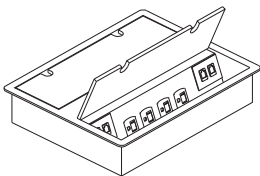
PT-15SP (silver pearl) \$2146
PT-15PB (black) \$2146
PT-15SL (silver anodized aluminum) \$2171
PT-15BL (black anodized aluminum) \$2171
 15" x 9 1/8" decorative table trough with six power receptacles and two telecom plates. Each telecom plate to have one RJ-11 (phone) connection and one RJ-45 (data) connection. 10' power cord with molded plug. It is constructed of powder coated steel with a release.
 Factory installed (note location on order)
 (15 lbs)



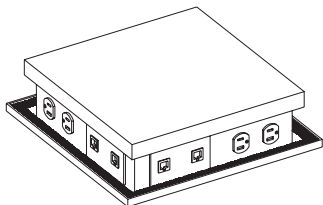
PT-30SP (silver pearl) \$3754
PT-30PB (black) \$3754
PT-30SL (silver anodized aluminum) \$4029
PT-30BL (black anodized aluminum) \$4029
 30" x 9 1/8" decorative table trough with 12 power receptacles and 4 telecom plates. Each telecom plate to have one RJ-11 (phone) connection and one RJ-45 (data) connection. 10' power cord with molded plug. It is constructed of powder coated steel with a release.
 Factory installed (note location on order)
 (21 lbs)



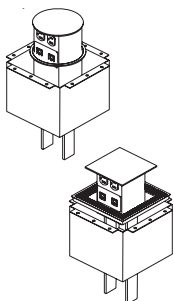
IM-1TTSP (silver pearl) \$696
IM-1TTSC (black textured finish) \$696
IM-1TTAL (brushed aluminum finish) \$1525
 14 1/2" x 6 3/4" Table top unit with (4) power, (1) Convenience Outlet, (2) 2.1 amp USB and (3) Telecom Plate Knockouts. Two configured Telecom Plates and one blank Telecom Plate included. The two configured plates have one RJ11 (phone) connection and one RJ45 (data) connection each. 72" cord with molded 3-prong plug and 15 amp circuit breaker.
 Factory installed (note location on order)
 (11 lbs)



IM-2TTSP (silver pearl) \$1266
IM-2TTSC (black textured finish) \$1266
IM-2TTAL (brushed aluminum finish) \$2333
 14 1/2" x 10 3/8" Table top unit with 4 duplexes (8 power) and 4 telecom plates. Each telecom plate comes standard with one RJ-11 (phone) and one RJ-45 (data) connection. 72" cord with molded plug and 15 amp circuit breaker.
 Factory installed (note location on order)
 (11 lbs)



EL-1212 \$1875
 13 1/8" x 13 1/8" Pop-up unit with gas spring lift with 4 duplexes (8 power) and 4 telecom plates. Two telecom plates comes standard with one RJ-11 (phone) and one RJ-45 (data) connection. Two telecom plates comes standard with two RJ-45 (data) connection. 10' cord with molded plug and 15 amp circuit breaker. Textured black finish. Wood top with trim plate and wire mgmt. brush. Factory installed (note location on order)
 (33 lbs)

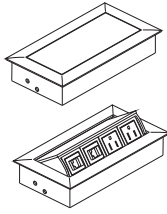


PU-5BLRD (round top w/ black finish) \$1143
PU-5SSRD (round top w/ brushed stainless steel finish) \$1523
 7 1/4" x 7 1/4"
PU-5BLSQ (square top w/ black finish) \$1279
PU-5SSSQ (square top w/ brushed stainless steel finish) \$1616
 5 13/16" Dia. Manual gas sprig lift with 2 duplexes (4 power) and 2 telecom plates. Each telecom plate comes standard with one RJ-11 (phone) and one RJ-45 (data) connection. 72" cord with molded plug and 15 amp circuit breaker. Available with a round or square top with a trim plate or trim ring and brush grommet. Black textured or stainless steel finish. Factory installed (note location on order)
 (15 lbs)

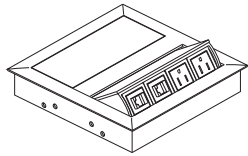
ACCESSORIES

List Price

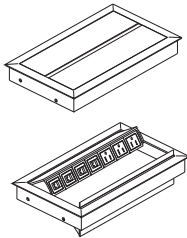
Power Options



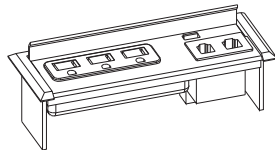
LD-22AL (silver anodized aluminum) \$409
LD-22BL (black anodized aluminum) \$544
 8 3/8" x 4 7/16" Constructed out of natural anodized aluminum. This unit has a one touch to open top with one duplex (2 power), one RJ-11 (phone) connection and one RJ-45 (data) connection. 72" power cord with molded plug and 15 amp circuit breaker. UL listed. Factory installed (note location on order)
 4 lbs



DD-44AL (silver anodized aluminum) \$854
DD-44BL (black anodized aluminum) \$1136
 8 3/8" x 8 3/8" Constructed out of natural anodized aluminum. This double sided unit has a one touch to open top with one duplex (2 power), one RJ-11 (phone) connection and one RJ-45 (data) connection. 72" power cord with molded plug and 15 amp circuit breaker. UL listed. Factory installed (note location on order)
 7 lbs



BD-313AL (silver anodized aluminum) \$794
BD-313BL (black anodized aluminum) \$1057
 12 13/16" x 7 5/8" Constructed out of natural anodized aluminum. This unit is designed with a one touch double doors that function as cable management portals that close while in use. It comes with 3 receptacles, one RJ-11 (phone) connection and three RJ-45 (data) connection. 72" power cord with molded plug and 15 amp circuit breaker. UL listed. Factory installed (note location on order)
 7 lbs



FC-727 (black) \$386
 7 9/16" x 2 7/8" Power/communication center - black with door. Surface mounted with one RJ-45 (data), one RJ-11 (phone), one USB port and three simplex outlets. Factory installed (note location on order)
 2 lbs

Wire Management Options



200GR \$61
 Wire management grommet
 4 1/8" x 2 11/16" x 1 1/8"H - black
 factory installed (note location on order)



LH \$83
 Wire management channel, 22" length - set of four, double sided velcro attachment
 (4 lbs)



CL \$65
 Velcro wire management (secures wires) - set of four, double sided table attachment
 (1 lbs)



WA No charge
 Wall access cut-out (modesty panels on bridges, credenzas, desks and return)
 specify location on order.

ACCESSORIES

List Price

Lighting Options



TL48 \$215
Task light, high efficiency (UL approved)
6" x 48" x 1 1/2"H (15 lbs)



TL36 \$197
Task light, high efficiency (UL approved)
6" x 36" x 1 1/2"H (15 lbs)



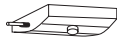
TL24 \$185
Task light, high efficiency (UL approved)
6" x 24" x 1 1/2"H (15 lbs)

TL31LED-S \$560
31" stand-alone or starter LED energy efficient light. ETL listed. Soft-touch switching with instant on to fade way off. Infinite dimming with last state memory. Automatic off after 10 hours. Includes power supply.
31" x 2" x 1 1/2"H (4 lbs)

TL17LED-S \$454
17" stand-alone or starter LED energy efficient light. ETL listed. Soft-touch switching with instant on to fade way off. Infinite dimming with last state memory. Automatic off after 10 hours. Includes power supply.
17" x 2" x 1 1/2"H (2 lbs)

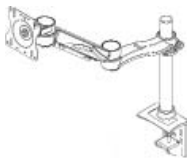
TL31LED-A \$494
31" adder LED energy efficient light for linking to a starter task light. ETL listed. Soft-touch switching with instant on to fade way off. Infinite dimming with last state memory. Automatic off after 10 hours.
31" x 2" x 1 1/2"H (4 lbs)

TL17LED-A \$311
17" adder LED energy efficient light for linking to a starter task light. ETL listed. Soft-touch switching with instant on to fade way off. Infinite dimming with last state memory. Automatic off after 10 hours.
17" x 2" x 1 1/2"H (2 lbs)

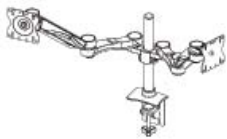


TL03-OCPS \$305
Occupancy sensor, integrates with above LED light options. Automatic off after 30 minutes of inactivity. Connects to end of light fixture (adds 3" to length of fixture). One sensor controls starter and connected adders.
3" x 2" x 1 1/2"H (1 lbs)

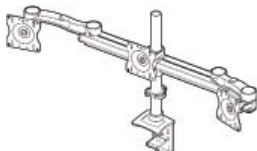
Monitor Mount Options



SSM-7815H \$388
Single-screen Monitor adjustable mount, double extension with one height adjustable segment, quick connect clamp, available in silver or black finish (10 lbs)



DSM-7815H \$738
Double-screen Monitor adjustable mount, two double extension with one height adjustable segment per screen, quick connect clamp, available in silver or black finish (15 lbs)



TSM-7815H \$780
Triple-screen Monitor adjustable mount, two single extension arms, one pole mounted arm on a single beam, quick connect clamp, available in silver or black finish (10 lbs)

Desk Systems / Toolbars

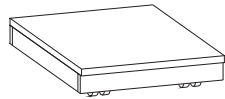


CPFS-48 \$360
Worksurface mounted desk system / toolbar, 48" slat wall section - that can be combined into multi sectional desking system. Two paper trays, one binder holder, one accessory tray and one folder sorter standard per 4' section. Connects with two end post clamps, 90 degree post are available - contact customer service for ordering.
48"W x 16 5/8"H, black finish (25 lbs)

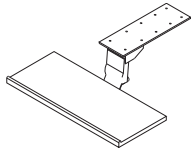
ACCESSORIES

List Price

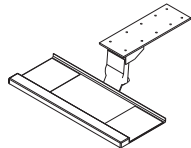
Printer Stands / Keyboards and CPU Holders



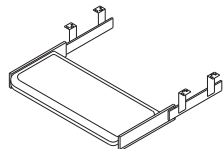
MPS \$928
 Mobile printer stand (on casters) - specify finish
 19"W x 19"D x 6"H (20 lbs)



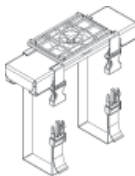
AKPW \$472
 Articulating keyboard - leverless, with non- handed mouse pad, 5" height adjustment, 25 degree tilt - 360 degree swivel, wooden keyboard tray - specify finish
 11 1/4" x 21 1/2" x 2 3/4"H (25 lbs)



AKP \$337
 Articulating keyboard - leverless, with non- handed mouse pad, 5" height adjustment, 25 degree tilt - 360 degree swivel, black molded keyboard tray
 11" x 25" x 2 3/4"H (21 lbs)

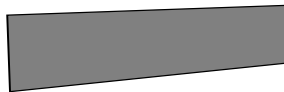


KD \$153
 Pull-out keyboard - leverless, black molded keyboard tray
 10 5/8" x 21 1/2" x 3 5/8"H (15 lbs)



CPU-7325D \$92
 CPU holder, accomodates CPU's up to 75 lbs, 360 degree swivel, 17" track
 (15 lbs)

Fabric Tackboards (Refer to desk fabric card for fabric selections)



TB84-12 \$432
 Fabric tackboard, (COM, Grade A, Grade B) 3/4" x 84" x 12"H (20 lbs)

TB78-12 \$415
 Fabric tackboard, (COM, Grade A, Grade B) 3/4" x 78" x 12"H (18 lbs)

TB72-12 \$374
 Fabric tackboard, (COM, Grade A, Grade B) 3/4" x 72" x 12"H (16 lbs)

TB66-12 \$353
 Fabric tackboard, (COM, Grade A, Grade B) 3/4" x 66" x 12"H (14 lbs)

TB60-12 \$332
 Fabric tackboard, (COM, Grade A, Grade B) 3/4" x 60" x 12"H (12 lbs)

TB48-12 \$290
 Fabric tackboard, (COM, Grade A, Grade B) 3/4" x 48" x 12"H (11 lbs)

TB42-12 \$256
 Fabric tackboard, (COM, Grade A, Grade B) 3/4" x 42" x 12"H (10 lbs)

TB84-8 \$415
 Fabric tackboard, (COM, Grade A, Grade B) 3/4" x 84" x 8 3/4"H (20 lbs)

TB78-8 \$394
 Fabric tackboard, (COM, Grade A, Grade B) 3/4" x 78" x 8 3/4"H (18 lbs)

TB72-8 \$352
 Fabric tackboard, (COM, Grade A, Grade B) 3/4" x 72" x 8 3/4"H (16 lbs)

TB66-8 \$325
 Fabric tackboard, (COM, Grade A, Grade B) 3/4" x 66" x 8 3/4"H (14 lbs)

TB60-8 \$311
 Fabric tackboard, (COM, Grade A, Grade B) 3/4" x 60" x 8 3/4"H (12 lbs)

TB48-8 \$293
 Fabric tackboard, (COM, Grade A, Grade B) 3/4" x 48" x 8 3/4"H (11 lbs)

TB42-8 \$277
 Fabric tackboard, (COM, Grade A, Grade B) 3/4" x 42" x 8 3/4"H (10 lbs)

